

# sashlifter lock

The sashlifter lock has been designed to meet a range of requirements specified by PVCu door producers and delivers a number of performance benefits.

The unique sashlifter mechanism ensures the lock is continually fully engaged throughout its working life.

## Top & bottom hook bolt

- Reverse hook bolts for anti-lift
- Assists door compression with additional roller cams
- High level of security against attack

## Centre hookbolt

- Extra level of security in centre of door with lock and deadbolt
- High level of security against attack
- Sashlifter mechanism

## Adjustable roller

- Provides a tight weatherproof seal down the full length of the door
- Increased smoother and lower operational forces
- Less wear on hooks
- Adjustable 1.5mm to right or left of centre



[www.securedbydesign.com](http://www.securedbydesign.com)

# enhanced security

For security products way ahead of their time, look no further than the new generation of effective yet stylish door and window locking systems offered by the Castle Collection.

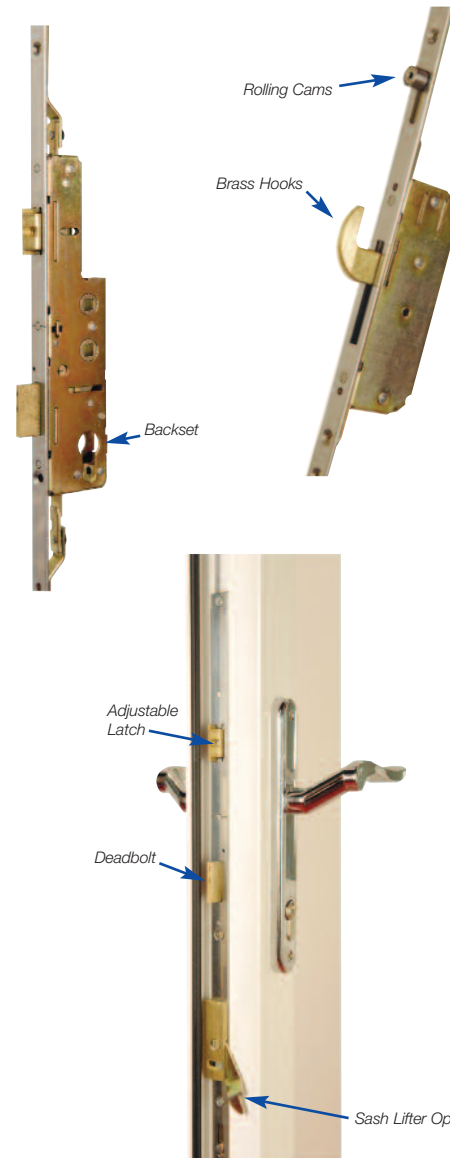
If you want a high security front or back door lock, the robust sashlifter boasts a multi-point locking system and is made from corrosion-proof stainless steel.

With locking systems specially tailored to fit tilt and slide patio doors, in-line sliding doors and French doors, there's no excuse not to properly secure every entrance into your home.

The sashlifter system is stringently tested to the BSI enhanced security Kitemark PAS 023/024, while the doors are approved by

the Association of British Insurers and are the preferred specification for police crime prevention in the UK.

Under the watchful eye of technical representatives from industry trade bodies and consultation from The Association of Chief Police Officers, hinges, shootbolts, mortice bolts, roller cams and hook bolt mechanisms are rigorously tested by screwdrivers, brick bolsters and chisels, to ensure that the products – and your home – are as safe as houses!



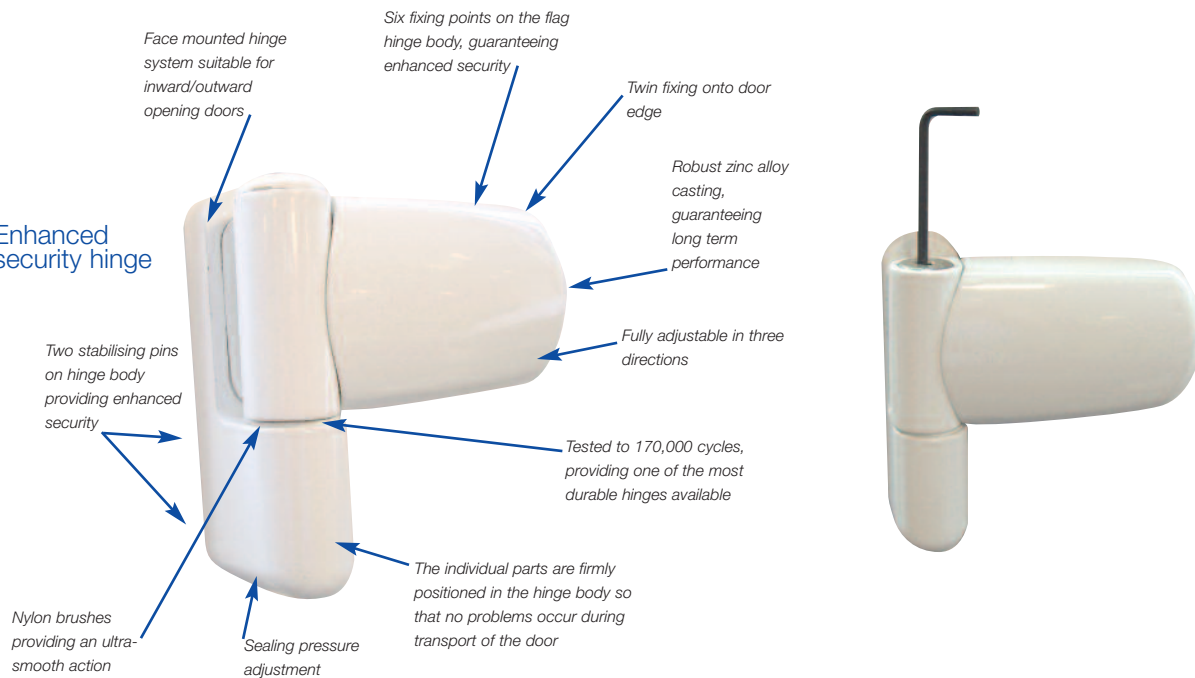
## Maintenance tips

Lightly lubricate the lock mechanism and handles twice a year, and remove any dust and grime from the surface with a soft damp cloth. From time to time, check the product and tighten fixings if necessary to ensure peak performance.

## Material Specification

Face Plate	Stainless Steel 430
Drive Rods	Steel SPCC3141
Hooks, Latch & Deadbolt	Brass C37771
Cases	Steel SPCC3141
Rollers	Stainless Steel 430
Die Castings	Zinc BS1004A

## Enhanced security hinge



- Conforms to PAS 023/024 without using dog bolts on the hinge side
- Fully adjustable in three directions
- Stainless steel fixing pins on the hinge and flag body
- Repeated testing to 170,000 cycles
- Choice of finishes to suit all doors
- Well designed and pleasing on the eye
- Extremely durable hinge, withstanding both tensile and excessive pressure forces

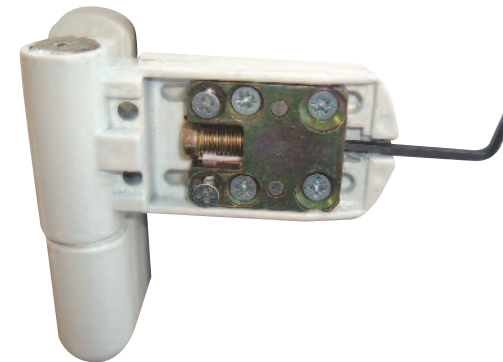


## Types of glass

Pilkington K glass: Boasts a U-value of 1.9w/m<sup>2</sup>k with 30 per cent better insulation than some conventional insulating glass units, resulting in cheaper fuel bills. Also available in patterned glass and other glass configurations to further enhance thermal insulation values.

Safety glass units: Toughened glass increases the impact resistance by up to five times that of annealed glass. Meets the safety requirement BSEN 12150.

Argon-filled sealed units are also available.



## 15 reasons to choose Castle Collection doors and windows

1. Hooks, rollers and deadbolt
2. Standard shootbolt engagement
3. Stainless steel face plate
4. Deep engagement by hooks and deadbolt
5. Multi keeps and adjustable striker plates
6. Applications for both single and double doors
7. Choose from an attractive range of heavy duty handles
8. High quality reversible latch
9. High security hinges, allowing for an adjustment of 8mm
10. Doors can be opened inwards or outwards
11. Manufactured under BS EN ISO 9001 2000 quality management system
12. An internally glazed 70mm system
13. Slimmer sightlines, provided by chamfered profiles
14. Key locking handle
15. Wide choice of decorative glass, panels and hardware